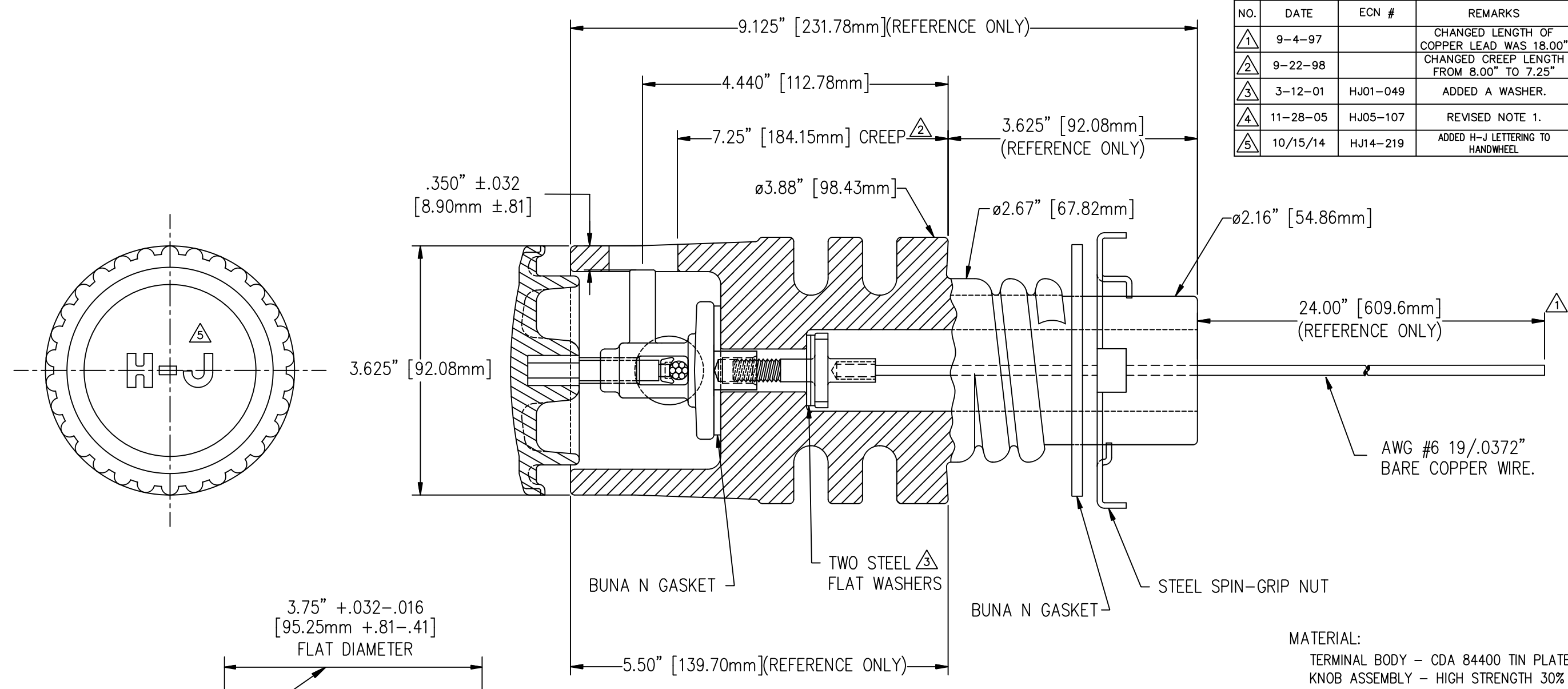


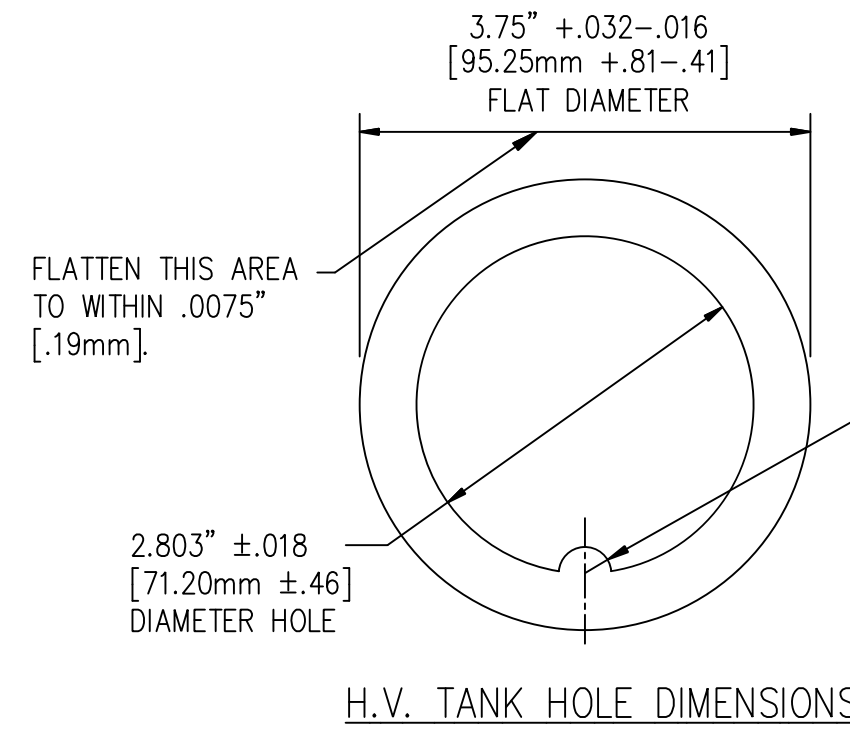
REVISIONS					
NO.	DATE	ECN #	REMARKS	BY	APPD.
1	9-4-97		CHANGED LENGTH OF COPPER LEAD WAS 18.00"	BTD	LHE
2	9-22-98		CHANGED CREEP LENGTH FROM 8.00" TO 7.25"	CJT	JFS
3	3-12-01	HJ01-049	ADDED A WASHER.	CJT	LHE
4	11-28-05	HJ05-107	REVISED NOTE 1.	CJT	SP
5	10/15/14	HJ14-219	ADDED H-J LETTERING TO HANDWHEEL	TJF	BLB



MATERIAL:
 TERMINAL BODY - CDA 84400 TIN PLATED
 KNOB ASSEMBLY - HIGH STRENGTH 30%
 GLASS FILLED POLYESTER (VALOX)

PORCELAIN NOTES:
 1. WET PROCESS ELECTRICAL PORCELAIN.
 2. GREY GLAZE MUNSELL 5BG 7.0/0.4.
 3. TOLERANCE ± 3% WITH NOTHING LESS
 THAN ± .03 UNLESS OTHERWISE NOTED.

NOTES:
⁴ 1. REFER TO ILL-AS1305-00 FOR
 DETAILS OF HAND WHEEL
 FIELD ASSEMBLY.



TOLERANCES (EXCEPT AS NOTED)			H-J ENTERPRISES, INC. 3010 HIGH RIDGE BLVD. HIGH RIDGE, MO. 63049 USA PHONE 1-636-677-3421 FAX 1-636-376-1915		
DECIMAL	± .032" / .8mm		8.7 KV SIDEWALL H.V. BUSHING ASSEMBLY CABLE RANGE OF #8 AWG - 2/0		
FRACTIONAL	±		MATERIAL (SEE ABOVE)		
ANGULAR	± 2°		CHK'D CLS	APP'D	DRAWING NO. AS1305-004
		DRAWN BY BTD	DATE 6-27-97	SCALE N.T.S.	